

PANTONE[®]
FASHION
COLOR
REPORT
FALL
2013



Nanette Lepore



PANTONE[®] FASHION COLOR REPORT FALL 2013



Nanette Lepore

Linden Green
PANTONE 15-0533



Emerald
PANTONE 17-5641



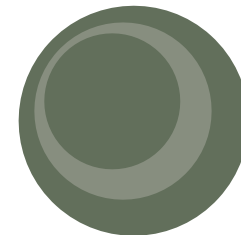
Mykonos Blue
PANTONE 18-4434

Acai
PANTONE 19-3628



Samba
PANTONE 19-1662

Koi
PANTONE 17-1452



Deep Lichen Green
PANTONE 18-0312

Vivacious
PANTONE 19-2045



Carafe
PANTONE 19-1116



Turbulence
PANTONE 19-4215

Fall 2013: A Palette of Many Moods

This season, designers express the many moods of fall with skillfully arranged collections that will enhance and enliven customers' outlooks as the colder months set in. Similarly, colors come together to create moods that range from sophisticated and structured to lively and vivid, encapsulating our inherent need for wardrobe variety to reflect emotions that run from thoughtfully introspective to irrepressibly elated.

"Just as the leaves change in autumn, the consumer will enjoy the ability to change their 'look' and try a new approach to their wardrobe for brisk days ahead," said Leatrice Eiseman, executive director of the Pantone Color Institute®. *"The fall 2013 palette allows for that versatility and experimentation."*

With the changing season, the greens from spring evolve and develop. Multifaceted **Emerald** continues to sparkle and fascinate, bringing luxury and elegance to the palette, while yellow-toned **Linden Green** brings a lightness and brightness to the deeper shades of fall. Try pairing both with **Mykonos Blue**, a bold, meditative blue, for a classic and relaxed fall look.

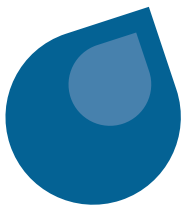
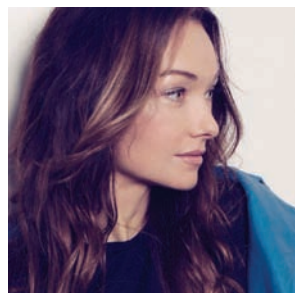
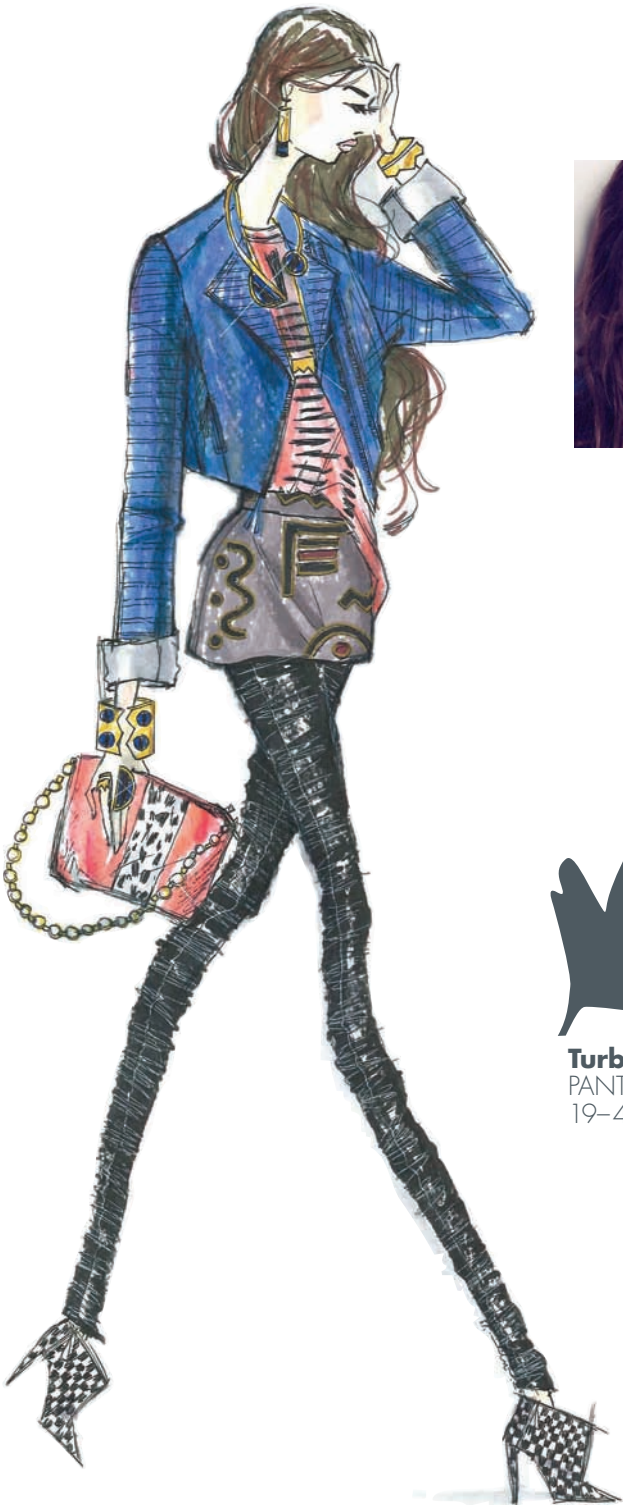
Exotic **Acai** adds mystery and richness to the palette, and can be incorporated with the other colors to create a number of powerful fall combinations. Pair the elegant shade of purple with

Emerald for a regal disposition, or spirited **Samba** red for an expressive and dramatic look. **Koi**, a decorative orange with dazzling and shimmering qualities, is a statement color that serves as a pick-me-up for your wardrobe. **Vivacious**, an unruly and wildly deep fuchsia, adds an ebullient sensuality to the palette.

Pair Vivacious with anchoring **Deep Lichen Green**, a naturally lush shade of green, for a dynamic juxtaposition that captures both ends of the seasonal spectrum. Rounding out this season's cornerstone colors, **Turbulence**, a dark mercurial gray, and **Carafe**, a rich, glamorous brown, provide more interesting and sophisticated alternatives to the black basics usually worn in colder months. Both staple neutrals pair gracefully with more expressive colors within the palette, such as Samba, Koi and Vivacious.

For more than 20 years, Pantone, the global authority on color, has surveyed the designers of New York Fashion Week and beyond to bring you the season's most important color trends. This report previews the most prominent hues for fall 2013.





Mykonos Blue
PANTONE
18-4434



Turbulence
PANTONE
19-4215

Kelly Wearstler

inspiration

My favorite designer and architect Ettore Sottsass — many of the shapes and forms in the collection were based on his beautiful ceramic totems; the palette was inspired by a trip to a quarry to select slabs of stones and marble for an interior design project.

prominent colors

A Brilliant Aqua Green, a Spirited Bright Lime Green, Cool Maroon and Light Purple, pops of Corals and Dark Rich Purple.

signature color

Copper, a cool metallic appropriate for autumn — I layered hints of Copper into a handful of the embellished pieces; I also included a foil twill group and showcased it in the hardware.

must-have item for fall 2013

Two amazing leather jackets in spirited yet wearable colors: One in a beautiful Muted Periwinkle and the other in an amazing textured Aqua leather.

What color advice do you share with your customers?

Be inspired by the colors in your closet. What looks good on you will feel good on you. Surround yourself with your favorite colors!

kellywearstler.com
facebook.com/kelly.wearstler.inc
twitter.com/kellywearstler
pinterest.com/kellywearstler
instagram.com/kellywearstler
myvibemylife.com

Hervé Léger by Lubov Azria



inspiration

The opulence in nature. There is something mysteriously beautiful the way nature expresses emotions visually. Shapes, textures and graphics in the wild are couture-like creations that translate into this season's palette.

prominent colors

Black, Anthracite and Malachite.

signature color

Malachite because of the richness of nature it represents; a garden of urban expression, exposed by nature's palette. Green represents life.

must-have item for fall 2013

A beautifully engineered jacquard dress.

What color advice do you share with your customers?

Keep your color palette simple in neutral shades. Choose organic colors that highlight your already naturally flourishing exuberance.



Linden Green
PANTONE
15-0533



Turbulence
PANTONE
19-4215

herveleger.com



Nanette Lepore

inspiration

Inspired by the darker side of nature: The beauty of agate, wrought from molten masses of ancient lava, as well as the iridescent sheen of oil on water.

prominent colors

Midnight Violet woven with warm strands of Copper pairs well with Cool Steel Blue. Strong Viridian Green swirls with Olive and Coppery undertones in an oil slick print.

signature color

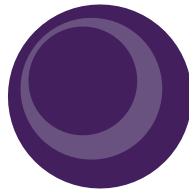
Midnight Violet is autumn's deep and luxurious new neutral; it pairs well with all of the colors in my collection.

must-have item for fall 2013

A hologram handbag will add excitement to your fall wardrobe by providing a pop of color to darker looks.

What color advice do you share with your customers?

Be bold with color and experiment with new and unexpected mixes.



Acai
PANTONE
19-3628



Vivacious
PANTONE
19-2045

nanettelepore.com
facebook.com/nanettelepore.fb
twitter.com/nanettelepore
pinterest.com/nanettepins
instagram.com/nanettelepore



Samba
PANTONE
19-1662

Rachel Roy

inspiration

The masters of Chiaroscuro and how they manipulate and create dimension between light and dark. That contrast for me — either done subtly or bolder — is a very interesting use of color.

prominent colors

Fiery and Deep Port Reds, as well as Chambord and Noble Blue; Marsh and Hunter Greens, a Fiery Ochre Yellow and Glowing Amber; a dramatic jeweled Malachite Green is the new winter-bright statement; Pearl and Winter Whites and Violet are essential accents.

signature color

Fiery Red is the rich foundation color on which other jewel tones are layered, such as Malachite Green, Deep Amber and Hunter Greens. Juxtaposing those dark colors with Pearl, Winter White or Violet as accents gives it a modern feel.

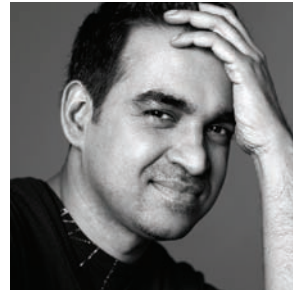
must-have item for fall 2013

An ornate hand-stitched sweater in Gold that pairs back to menswear pinstripe pants and corset dresses with decorative sleeves in Deep Chambord.

What color advice do you share with your customers?

Almost nothing else but color can instantly change your mood or outlook when you put it on. Color provides instant confidence. Sometimes women shy away from it, so I want to show them effortless ways to use it in their everyday wardrobe.

rachelroy.com
[facebook.com/rachelroy](https://www.facebook.com/rachelroy)
twitter.com/rachel_roy



Bibhu Mohapatra

inspiration

The art world, specifically the visionary influences of the first third of the 20th century — the Dadaists and the Bauhaus.

prominent colors

Deep Midnight Blues and Cool Graphites with highlights of Gold.

signature color

Aubergine as it's the perfect day to night color.

must-have item for fall 2013

The little White dress.

What color advice do you share with your customers?

The top color advice I can offer is to break the rules.



Koi
PANTONE
17-1452

bibhu.com

[facebook.com/bibhuNYC](https://www.facebook.com/bibhuNYC)

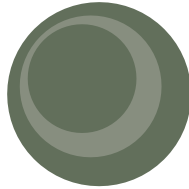
twitter.com/bibhumohapatra

bibhu.tumblr.com

Pamella Roland by Pamela DeVos



Photo: Nigel Barker



**Deep Lichen
Green**
PANTONE
18-0312

inspiration

My recent trip to Saint Petersburg, Russia — it is truly a regal city that was wonderful to visit.

prominent colors

Deep tones such as Regal Red, Midnight Navy, Royal Plum, Moss Green, Stone and highlights of Metallic Gold.

signature color

Moss Green because it is unexpected and has a depth and richness that I love.

must-have item for fall 2013

The Moss Green cocktail dress with soft draped neckline and Black lace overlay which gives it a smoky contrast.

What color advice do you share with your customers?

Try new colors as it is a great way to liven up your wardrobe. It is important that you wear color with confidence and not let it wear you.

pamellaroland.com
[facebook.com/pamellaroland](https://www.facebook.com/pamellaroland)
twitter.com/pamellaroland
pamellaroland.com/blog



Vivacious
PANTONE
19-2045

Tadashi Shoji

inspiration

The Winter Palace in the Hermitage Museum, St. Petersburg, Russia.

prominent colors

Carmine, Black and Purple Sapphire.

signature color

Carmine — it is deeper than Classic Red but brighter than last season's Oxblood.

must-have item for fall 2013

My gathered neoprene caplet with lace overlay. I love its versatility. You can throw it on over a dress for a night on the town or pair with jeans for a casual yet sophisticated look.

What color advice do you share with your customers?

Don't be afraid of color and pairing unexpected shades such as Orange and Green, or Red and Purple. Color enhances your wardrobe and can boost your mood.

tadashishoji.com
facebook.com/tadashishoji
twitter.com/tadashishoji
pinterest.com/tadashishoji
instagram.com/TadashiShoji
blog.tadashishoji.com



Joy Cioci

inspiration

The film *The Labyrinth* — the whimsical nature of the movie and colors used.

prominent colors

Fantasy Red, Hedge Green and mixes of metallics.

signature color

Hedge Green — it went well with my inspirational concept.

must-have item for fall 2013

A coat mixed with leather, fur and tweed.

What color advice do you share with your customers?

Wear colors that bring out your best features and make you happy.



Emerald
PANTONE
17-5641

joycioci.com
facebook.com/joyciocille
twitter.com/joycioci
pinterest.com/joycioci
instagram.com/joycioci



TiA CiBANI

inspiration

A 1924 portrait of Peggy Guggenheim by Man Ray.

prominent colors

Gradient shades of Heather Gray, Mélange Slate and Deep Charcoal with various shades of metallics in Antique Brass, Patina Champagne and Oxidized Silver, accented by jewel tones of Vibrant Magenta and Rich Topaz and balanced by photographer's White and Film Black.

signature color

Shades of Gray such as Heather Gray, Mélange Slate and Deep Charcoal because they reference Man Ray's photogram technique.

must-have item for fall 2013

A maxi sunray pleated skirt in metallic shades of Antique Brass, Patina Champagne and Oxidized Silver — our pleats are made in New York City by artisans who are keeping the art of pleating alive.

What color advice do you share with your customers?

All color is beautiful. It is how it is combined and worn that makes it work on an individual or not.



Carafe
PANTONE
19-1116



Turbulence
PANTONE
19-4215

tiacibani.com
[facebook.com/tiacibani](https://www.facebook.com/tiacibani)



Samba
PANTONE
19-1662

Tracy Reese

inspiration

Beautiful textiles.

prominent colors

Scarlet, Cerise, Teal, Aborigine, Tan and Lychee — all with Black.

signature color

Black. Black is back!

must-have item for fall 2013

Black fit and flare dresses.

tracyreese.com
[facebook.com/tracyreese](https://www.facebook.com/tracyreese)
twitter.com/tracy_reese

BCBG by Lubov Azria

inspiration

The color palette travels to the beautiful history inlaid within the walls of Istanbul architecture contrasted by the artwork of contemporary artist Phil Frost.

prominent colors

Black and White, Deep Green and a range of earth tones, including Dusty Pink, Warm Barn Red and Burgundy, Cool Blues and Vibrant Teal.

signature color

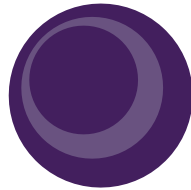
White and Blues because they add a clean, modern edge to offset the dark tones of the collection.

must-have item for fall 2013

A hand-cut leather t-shirt or shift dress offered in rich, natural tones.

What color advice do you share with your customers?

Color influences your mood; wear colors and you will radiate happiness and confidence.



Acai
PANTONE
19-3628



Turbulence
PANTONE
19-4215



bcbg.com
facebook.com/bcbgmaxazria
twitter.com/bcbgmaxazria
pinterest.com/bcbgmaxazria
instagram.com/bcbgmaxazria
bonchicblog.com

Charlotte Ronson

inspiration

My British heritage, contrasted with bold graphic print and angular paneling for a decidedly modern look.

prominent colors

Core Colors: Forest Green, Midnight Blue, Graphic Red, Royal Purple and Black.
Highlight Colors: Heritage Gray, Oaky Tan and Heirloom Burgundy.

signature color

Forest Green. It has an old-world feeling, but the amazingly deep tone lends itself well to different fabrications.

must-have item for fall 2013

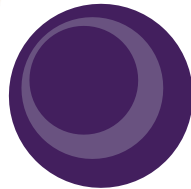
Mixed houndstooth, plaid and leather dress.

What color advice do you share with your customers?

Don't be afraid to be bold and try a new color. Spend time trying on different options when you're shopping and sometimes you'll be pleasantly surprised.



Emerald
PANTONE
17-5641



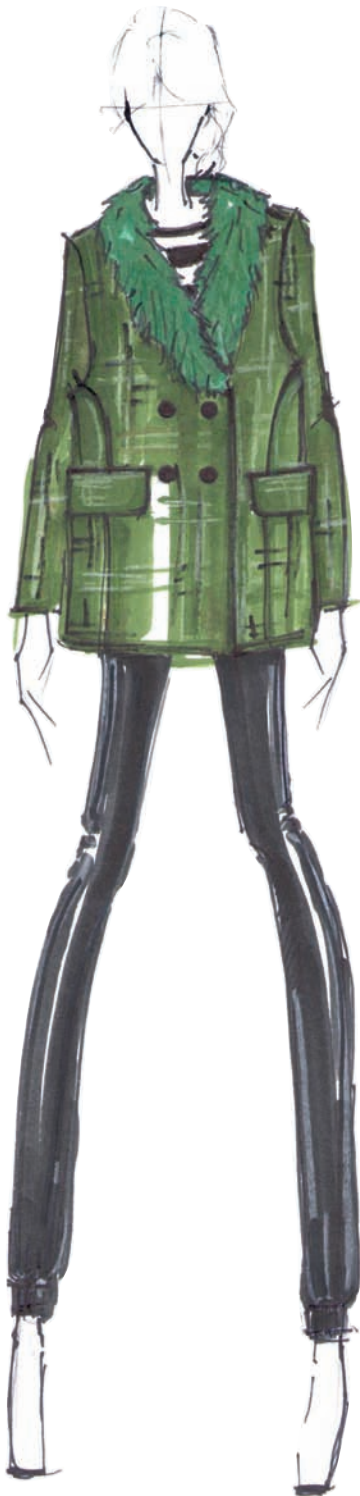
Acai
PANTONE
19-3628



Mykonos Blue
PANTONE
18-4434

charlotteronson.com
twitter.com/cjronson

WHIT-NY by Whitney Pozgay



inspiration

Romanticism with a dark and dreamy version of Marianne Faithfull as a muse — novelty fabrics, inky paisleys prints and brocades create a moody palette.

prominent colors

A lot of Dark Blues, Forest Greens and Plums; Metallic Berries and Rose Gold.

signature color

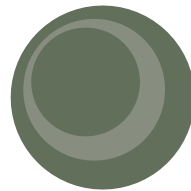
Plum — it is sultry and dark, but still very feminine.

must-have item

A mixed media dress that mixes Rose Gold coated wool and Terracotta crepe with Black leather trim — the colors look so harmonious together.

What color advice do you share with your customers?

Color is your friend! Don't be afraid to wear plenty of it.



Deep Lichen Green
PANTONE
18-0312



Emerald
PANTONE
17-5641



Turbulence
PANTONE
19-4215

whit-ny.com
facebook.com/pages/whit/290949786586
twitter.com/whit_ny
pinterest.com/whitpozgay
whit-ny.tumblr.com



Emerald
PANTONE
17-5641

Barbara Tfank

inspiration

The colors and textures of Ottoman Empire textiles...done with a modern twist.

prominent colors

Teal Silk with Rose Gold and Yellow Gold brocade floral motif.

signature color

Teal and Metallic Rose and Yellow Golds. I find it to be a wonderful and striking color combination for textiles and shimmering Onyx with Red/Blue.

must-have item for fall 2013

A slim dress with cut out neckline in Teal and Gold, as well as a shimmering Onyx floral bouquet dress with portrait collar.

What color advice do you share with your customers?

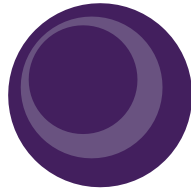
Choose a piece of clothing in a color you love so you can enjoy wearing it for many years and build around it with complementing colors that you can add to create a wonderful palette for your wardrobe.

btfank.com

[facebook.com/barbara.tfank](https://www.facebook.com/barbara.tfank)



Photo: Melanie Dunea



Acai
PANTONE
19-3628



Turbulence
PANTONE
19-4215

Carmen Marc Valvo

inspiration

The current mood of society.

prominent colors

Black, Nude with shots of Merlot.

signature color

Black.

must-have item for fall 2013

A Black skinny-leg pant.

What color advice do you share with your customers?

A color that complements your skin tone.

carmenmarcvalvo.com

[facebook.com/pages/carmen-marc-valvo/120936345623](https://www.facebook.com/pages/carmen-marc-valvo/120936345623)

twitter.com/carmenmarcvalvo

Jenny Packham



Mykonos Blue
PANTONE
18-4434

inspiration

Historical paintings depicting salon gatherings of the 17th and 18th centuries — colors found in works by French artists, such as Abraham Bosse and Jean Francois de Troy have provided strong inspiration for this season.

prominent colors

Warm, rich tones: Dusted Pink, Warm Cinnamon, Blanched White, Deep Liquorice Black, Ink, Brushed Violet and Morello Cherry Red.

signature color

Ink Blue — it encapsulates the deep and evocative mood of the collection.

must-have item for fall 2013

A beaded cable knit body suit in Ink Blue.

What color advice do you share with your customers?

Select colors that make you and your world more interesting.

jennypackham.com
[facebook.com/thejennypackham](https://www.facebook.com/thejennypackham)
twitter.com/thejennypackham



Lela Rose

inspiration

Reading Phillip Pullman's *Brothers Grimm Fairy Tales* to my children — I have found myself captivated by the eternal magic of the folk stories and fairy tales with all of their velvety beauty and dark humor.

prominent colors

Vivid Fuchsia, Indian Paintbrush Red, Fern Green, Spun Sugar Ivory, Golden Forsythia, Juniper and Dusty Lilac.

signature color

A spate of Dusty Pinks, Lilacs and Vivid Fuchsia dresses and gowns that will float like spun sugar.

must-have item for fall 2013

A V-neck dress in silk matelassé made in a hand-inked floral in Golden Forsythia.

What color advice do you share with your customers?

Wear color and the bolder, the better. I love to work in saturated tones that have a beautiful sophistication and stand out amongst a sea of Black.

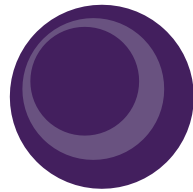


Koi
PANTONE
17-1452



Turbulence
PANTONE
19-4215

lelarose.com
facebook.com/lelarosestudio
twitter.com/lela_rose
pinterest.com/lelarosestudio
instagram.com/lela_rose
lelarosestudio.tumblr.com



Acai
PANTONE
19-3628

Trina Turk

inspiration

California Modern — the landscape and architecture of California.

prominent colors

Deep shades of purple: Black Plum, Wineberry and Deep Violet.

Bold base colors: Rusette, Ox Blood and Lake.

Pops of brilliant/bright colors: Persimmon and Magenta.

COLOR COMBOS

Prints/patterns using shades of purples: Wineberry, Black Plum, Deep Violet, Magenta, Deep Violet with Oxblood, Midnight with Russet, Midnight with Black, Black Plum with Persimmon and Lake with Charcoal.

signature color

Black Plum — the darkest shade of purple — paired with Oxblood or Persimmon creates an elevated look of monochromatic combos mixed with Wineberry and Magenta.

must-have item for fall 2013

“Jeanie” jumpsuit in Black Plum and Double Crepe Luxe.

What color advice do you share with your customers?

Color equals optimism, so wear it fearlessly.

trinaturk.com

[facebook.com/trinaturk](https://www.facebook.com/trinaturk)

twitter.com/shoptrinaturk

[pinterest.com/trinaturk](https://www.pinterest.com/trinaturk)

[instagram.com/trinaturk](https://www.instagram.com/trinaturk)

trinaturk.com/trina_talks.aspx

ADEAM by Hanako Maeda

inspiration

The musical *Into the Woods*, Gerhard Richter's series, *Landscapes*, and Kyoto during fall.

prominent colors

The deep colors of a forest, especially Deep Dark Green that reminds me of pine trees and Bright Orange Red that reminds me of momiji leaves in Kyoto during fall.

signature color

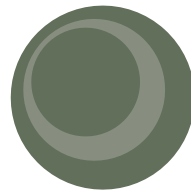
Midnight Blue — this deep, rich Navy ties in different colors of the forest like the night sky.

must-have item for fall 2013

Our vine motif velvet burnout dress — the velvet burnout pattern is in Deep Green.

What color advice do you share with your customers?

You shouldn't wear more than three different colors in an outfit. Some people can make it work, but it's usually very difficult. Neutrals with a pop color always works!



**Deep Lichen
Green**
PANTONE
18-0312



adeamonline.com
facebook.com/adeamonline
twitter.com/adeamonline

Ella Moss by Pamella Protzel-Scott



inspiration

A Dandy Haze inspired by '60s London — boy meets girl and a feminine sort of preppiness.

prominent colors

Deep Oxblood paired back to Onyx Black. Warm Fiery Tomato Red mixed with Soft Camel. Cool Midnight Blue and Bright Grassy Green.

signature color

Tomato Red. It's the perfect pop of color. Its vibrant and rich tone pairs beautifully back to layering neutrals like Camel, Ivory and Oxblood.

must-have item for fall 2013

Eco leather and print mix dress — hard and soft fabrics mixed together to create a balanced look.

What color advice do you share with your customers?

Color is fun and playful. Wear what makes you feel fantastic and expresses your mood.



Samba
PANTONE
19-1662



Turbulence
PANTONE
19-4215

ellamoss.com
facebook.com/ellamossbrand
twitter.com/ellamoss
pinterest.com/ellamoss
instagram.com/ellamoss

SAUNDER by Emily Saunder



inspiration

'70s rock, so we used colors that were as lush and rich as the music of that time.

prominent colors

Emerald-in-the-Woods, Baked Copper, Brown Bread, Warm Gold and Eggplant with splashes of Soot and Warm Cream.

signature color

Emerald Green — the richness of the color is bound to make anyone wearing it feel luxurious — it's a "look at me" color without being too brash.



Emerald
PANTONE
17-5641



Turbulence
PANTONE
19-4215

must-have item for fall 2013

The Black astrakhan motorcycle jacket with White shearing collar and cuffs; what it lacks in color it makes up for in texture. It's sexy as hell!

What color advice do you share with your customers?

To judge whether a color really looks good on you, stand in front of a mirror and look directly at your face. Raise the garment to just below your chin and observe how it affects your face. Does it wash you out or does it make your eye color pop? Does the color overwhelm you or does it let you shine? It's a simple indicator of whether something is flattering for your coloring.

thesaunder.com

twitter.com/thesaunder

[instagram.com/thesaunder](https://www.instagram.com/thesaunder)

ishouldcoco.tumblr.com

M.PATMOS by Marcia Patmos



inspiration

Joseph Albers' painting studies on paper square in lush shades of Green and vibrant Blues.

prominent colors

Shades of Blue and Green are played off of dark neutrals like Black and Charcoal; Blues like Peacock and Cobalt that play off Greens like Citron, Olive and Army; accents of warm middle tones like Cognac and Rust popped with shots of Persimmon.

signature color

Cobalt Blue — there is a vibrancy and starkness that looks modern and is also very easy to wear and mix with other colors.

must-have item for fall 2013

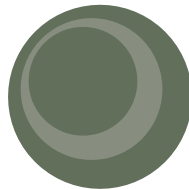
A wool cashmere cape in Cobalt Blue.

What color advice do you share with your customers?

Wear a color that (secretly) makes you happy. It can be something small or even a hidden bra strap, a toenail polish, belt, wallet or jacket lining. I find added enjoyment just about every day figuring out a tiny little color clash or pop or glint of metallic.



Mykonos Blue
PANTONE
18-4434



Deep Lichen Green
PANTONE
18-0312

mpatmos.com

facebook.com/pages/mpatmos/104452379612501

twitter.com/mpatmos

pinterest.com/marciapatmos

Mara Hoffman

inspiration

The elements of the Old World Circus — we fell in love with the story of the performers who traveled in old caravans, the animals they brought with them, and the mystical spirit of the circus. We wanted to mirror this energy with our colors.

prominent colors

High Risk Red, a great saturated Red that is perfect sitting next to other brights like Lime Greens, Caribbean Turquoise and Beaming Neon Pinks. Layered brights with more neutral tones of Golden Yellows, Midnight Blues and Camel Whites to help make the colors really pop.

signature color

It's not one color but how the colors work together — pairing colors together so that they collectively pump up a resonant energy into these prints, which then creates a sort of electricity and an illusion of light and energy in all its forms, bringing our prints to life.

must-have item for fall 2013

A vibrant oversized sweater is definitely important for those dreary fall days!

What color advice do you share with your customers?

Wear colors that make you happy and seek out happiness in everything you do.

marahoffman.com
facebook.com/officialmarahoffman
twitter.com/marahoffman
pinterest.com/marahoffman
instagram.com/marahoffman
marahoffman.com/blog



Emerald
PANTONE
17-5641



Vivacious
PANTONE
19-2045



Koi
PANTONE
17-1452



Sachin + Babi

inspiration

The Aurora Borealis (Northern Lights) — the sky has so many complex components, constantly changing from a Lime Green Glow to a Fiery Red and we wanted to capture that in each piece we created.

prominent colors

Pop colors such as Aurora Red, Mint Leaf, Limeade and a Viola Violet; multiple shades of Gray; cooler tones such as Oatmeal, Lead Gray and Warm Rabbit.

signature color

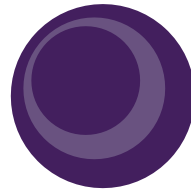
Viola Violet as well as our Gray tones. The Gray tones, a mix of both warm and cool, help complement all the bright colors.

must-have item for fall 2013

Our mixed media jacket — combining fur and suede with a textured knit keeps this piece unique. Its neutral color is very versatile and can be worn as outerwear or an inner layer.

What color advice do you share with your customers?

Embrace color.



Acai
PANTONE
19-3628



Turbulence
PANTONE
19-4215



sachinandbabi.com
facebook.com/sachinandbabi
twitter.com/sachinandbabi
pinterest.com/sachinandbabi
instagram.com/sachinandbabi



Yoana Baraschi

inspiration

The construction of armors and corsets and the beautiful resemblance to the anatomy of the cicadas — those amazingly colorful and noisy insects. We were attracted by the beautiful armor against the ether, like the luminescence of colors on their wings, as well as the play of extreme brights over darks, the contrasting elements of transparency, luminosity and hard shine.

prominent colors

A dialogue between colors in the Purple range: Purple Haze and Deep Orchid accented with Neon Pink and a Burned Coral/Persimmon; warmer ranges starting with Muted Clay and darker tones of Cranberry and Deep Claret; a Dark, Moody Ink Blue or Ocean Depths; contrasting accents of Muted Lime and Acacia; anchoring Cement Whites such as White Sand or Hazy Grays as in Wind Chime and Black, of course.

signature color

Muted Clay.

must-have item for fall 2013

A Persimmon or Deep Orchid embroidered quilted silk jacket with Black side panels; or a Deep Orchid, Cognac and Neon Pink tweed jacket with Black brocade sleeves.

What color advice do you share with your customers?

Be creative, experiment, try new unusual combinations; your heart will start beating faster when you get it right.



Acai
PANTONE
19-3628



Samba
PANTONE
19-1662



Linden Green
PANTONE
15-0533

[facebook.com/yoanabaraschi](https://www.facebook.com/yoanabaraschi)
[twitter.com/yoanabaraschi](https://www.twitter.com/yoanabaraschi)

Steven Alan

inspiration

The '60s, Françoise Hardy, post-bop jazz.

prominent colors

Soft Ecrú and Beige tones with Dusty Navy and Olive Wood, Pops of Slicker Yellows and Riot Reds.

signature color

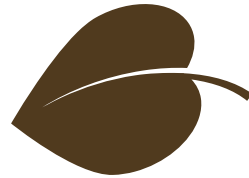
Shades of Beige — it is a great neutral and so versatile.

must-have item for fall 2013

Beige suede men's bomber jacket and the women's Camel trench coat.

What color advice do you share with your customers?

Incorporate soft color blocking into your wardrobe.



Carafe
PANTONE
19-1116



stevenalan.com

facebook.com/stevenalancollection

twitter.com/steven_alan

pinterest.com/stevenalainstagram.com/stevenalan

blog.stevenalan.com

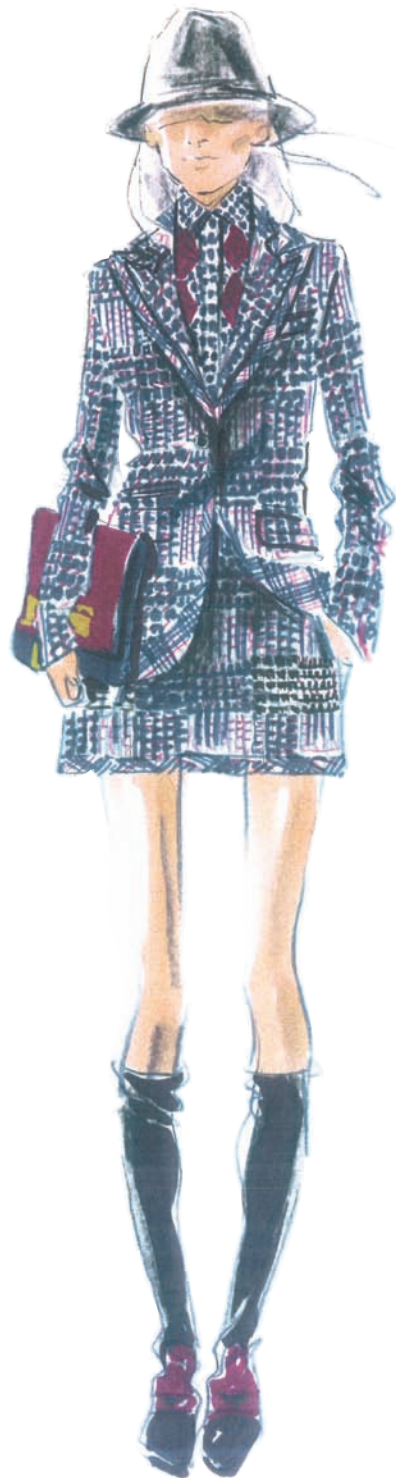


Photo: Richard-Phibbs

Tommy Hilfiger

inspiration

Classic Tommy Hilfiger colors and patterns.

prominent colors

Reds and Blues in shades of Cabernet and Navy Blazer are grounded by a palette of earth-toned neutrals including Bistre, Toasted Coconut and Carafe.

signature color

Jewel tone Reds, Green and Deep Blue in shades of Port Royale to Pine Grove and Deep Well to Navy Blazer.

must-have item for fall 2013

Sartorial outerwear in rich tones of Navy Blazer and Deep Well.

What color advice do you share with your customers?

Deep Navy is a preppy staple that looks good on everyone.



Mykonos Blue
PANTONE
18-4434



Vivacious
PANTONE
19-2045

tommy.com
facebook.com/tommyhilfiger
twitter.com/tommyhilfiger
pinterest.com/tommyhilfiger
instagram.com/tommyhilfiger



Photo: Getty Images



Koi
PANTONE
17-1452



Mykonos Blue
PANTONE
18-4434



Carafe
PANTONE
19-1116

Nicole Miller

inspiration

Traditional menswear ideas.

prominent colors

Teal, Hunter Green, Indigo, Veuve Cliquot (Yellow), Plum and of course lots of Black.

signature color

Hunter Green is the most important color — it's understated and looks so fresh this season.

must-have item for fall 2013

Our new wrap sweater vest in Heather Gray cashmere can be worn so many different ways — it's an instant, and cozy, wardrobe must-have!

What color advice do you share with your customers?

Stick to what looks good on you! Just because a color may be in, it might not be in for you.

nicolemiller.com
facebook.com/nicolemiller
twitter.com/nicolemillerNYC
pinterest.com/nicolemillerNYC
instagram.com/nicolemillerNYC
collection.nicolemiller.com/blog

Must Haves — Fall 2013

ADEAM by Hanako Maeda Our vine motif velvet burnout dress – the velvet burnout pattern is in Deep Green.

Angelo Galasso A houndstooth embossed leather coat in Brown.

Barbara Tfank A slim dress with cut out neckline in Teal and Gold, as well as a shimmering Onyx floral bouquet dress with portrait collar.

BCBG A hand-cut leather t-shirt or shift dress offered in rich, natural tones.

Bibhu Mohapatra The little White dress.

Carmen Marc Valvo A Black skinny-leg pant.

Charlotte Ronson Mixed houndstooth, plaid and leather dress.

Clover Canyon Our sculpted neoprene chandelier printed dress.

Ella Moss by Pamella Protzel-Scott Eco leather and print mix dress — hard and soft fabrics mixed together to create a balanced look.

Hernan Lander My version of the LBD: a fantastic Black, leather, pleated dress. Every woman that puts it on will instantly feel edgy, chic and sexy.

Herve Leger A beautifully engineered jacquard dress.

Jenny Packham A Beaded cable knit body suit in Ink Blue.

Joy Cioci A coat mixed with leather, fur and tweed.

Kelly Wearstler Two amazing leather jackets in spirited yet wearable colors: One in a beautiful Muted Periwinkle and the other in an amazing textured Aqua leather.

Kenneth Cole Shearling in every way!

Lela Rose A V-neck dress in silk matelassé made in a hand-inked floral in Golden Forsythia.

M.PATMOS by Marcia Patmos A wool cashmere cape in Cobalt Blue.

Mara Hoffman A vibrant oversized sweater is definitely important for those dreary fall days!

Nanette Lepore A hologram handbag will add excitement to your fall wardrobe by providing a pop of color to darker looks.

Nicole Miller Our new wrap sweater vest in Heather Gray cashmere can be worn so many different ways — it's an instant, and cozy, wardrobe must-have!

Pamella Roland by Pamella DeVos The Moss Green cocktail dress with soft draped neckline and Black lace overlay which gives it a smoky contrast.

Rachel Roy An ornate hand-stitched sweater in Gold that pairs back to menswear pinstripe pants and corset dresses with decorative sleeves in Deep Chambord.

Sachin + Babi Our mixed media jacket — combining fur and suede with a textured knit keeps this piece unique. Its neutral color is very versatile and can be worn as outerwear or an inner layer.

SAUNDER by Emily Saunder The Black astrakhan motorcycle jacket with White shearing collar and cuffs; what it lacks in color it makes up for in texture. It's sexy as hell!

Steven Alan Beige suede men's bomber jacket and the women's Camel trench coat.

Tadashi Shoji My gathered neoprene caplet with lace overlay. I love its versatility. You can throw it on over a dress for a night on the town or pair with jeans for a casual yet sophisticated look.

Tia Cibani A maxi sunray pleated skirt in metallic shades of Antique Brass, Patina Champagne and Oxidized Silver — our pleats are made in New York City by artisans who are keeping the art of pleating alive.

Timothy Everest Our double-breasted peacoat in a lovely lovat fabric, which has been realized in a muted shade of Tealy-Beige.

Tommy Hilfiger Sartorial outerwear in rich tones of Navy Blazer and Deep Well.

Tracy Reese Black fit and flare dresses.

Trina Turk "Jeanie" jumpsuit in Black Plum and Double Crepe Luxe.

WHIT-NY by Whitney Pozgay A mixed media dress that mixes Rose Gold coated wool and Terracotta crepe with Black leather trim — the colors look so harmonious together.

Yoana Baraschi A Persimmon or Deep Orchid embroidered quilted silk jacket with Black side panels; or a Deep Orchid, Cognac and Neon Pink tweed jacket with Black brocade sleeves.

Fashion Influencers

As Pantone celebrates 50 years of color, we asked the influencers which decade and colors associated with it has influenced them most.

What color advice do you share with your customers?



Betsy Burnham | Burnham Design

burnhamdesign.com
instantspacedesign.com
facebook.com/pages/burnham-design/21536637509
twitter.com/burnhamdesign
pinterest.com/burnhamdesign00
burnhamdesign.tumblr.com

The decade that most influences me is always the present one. My tastes are always changing, evolving and influenced by whatever is current. Right now I love tonal color combinations shot through with brights, such as Burgundy and shades of Blush and a hit of Hot Pink.

I'm also influenced by the '70s (not surprising since I grew up during that decade) because I love earthy neutrals like Khaki and Olive. I always use these kinds of colors to ground my rooms and provide juxtaposition to the brights that I bring in.

I encourage my clients to embrace color! I'm always pushing them outside their comfort zones and into pale Purple entry walls, onto Teal linen sofas, and Pink and Orange Turkish rugs. I also remind them that using color doesn't mean painting strong colors on their walls; on the contrary, saturated color becomes much more meaningful and sophisticated when used in conjunction with neutrals. I love White walls hung with bright, colorful, abstract art, a Khaki sofa with Hot Pink pillows or Gray kitchen cabinets with Chartreuse and White rag rugs on the floor. Good use of color is about the right mix and a balance that keeps it both livable and timeless.



Ken Downing | Neiman Marcus

neimanmarcus.com
facebook.com/neimanmarcus
twitter.com/neimanmarcus
pinterest.com/neimanmarcus

The '30s. Elsa Schiaparelli's Hot Pink has inspired me forever!

Wear what you love.

Confidence is the best color any women could wear!

Fashion Influencers



**Leatrice Eiseman | Executive Director,
Pantone Color Institute®**

colorexpert.com
facebook.com/leatriceeiseman
twitter.com/leatriceeiseman
eisemancolorblog.com

Historically, I think the '90s were amongst the most interesting. Huge “mood swings” in color. Grunge in the early '90s, shifting to glitz and glamour as the economy improved. The brilliant introduction of iMac® in an area where color had never been seen before, your father’s “Hush Puppies” suddenly turned Citrus Green, the rise of Japanese “Anime” in a fabulous juxtaposition of colors, African influence on color and design, and the “Zen” of spa-like Blues and Greens. So much change and creativity.

Start with the classic colors and the hues you really love but keep your mind open to change and try not to settle into too much color “dogma.” Be creative, open and allow yourself to have as much fun with color as you did when you were a child.



**Nicole Fischelis | GVP/Fashion
Director Trend Forecasting, Macy's**

macys.com
facebook.com/macys
twitter.com/macys
pinterest.com/macysofficial
community.macys.com

Color inspiration for me is more about intuition than looking back. Of course I look a lot at the various art movements including modern, Bauhaus to CoBrA and contemporary, but ultimately it's about the here and now.

Play with contrasting colors and do not hesitate to combine your brights or your pastels with Black or neutrals. Ultimately what counts is that the color you are wearing brings you joy and comfort!



Carson Kressley | Fashion Expert

carsonkressley.com
facebook.com/carsonkressley
twitter.com/carsonkressley
pinterest.com/carsonkressley

I think our childhood memories are always the most profound. And as an extremely visually-oriented person, I have fond and vivid memories of the colors of that time, the '70s!

While you might think that I'm going to name the late mid-century palette that informed the set direction and fashion design of the era (think The Brady Bunch living room and Carol Burnett's Bob Mackie-designed show stopping evening gowns — both of which I LOVE), I was actually influenced by a more traditional color palette.

During the '70s I was lucky enough to be spending a lot of time with my grandparents in Kentucky. They were involved in the horse business, so I was lucky enough to visit the Keeneland Racecourse and I was not only taken by the history and grandeur of the sport but with the fashion, too.

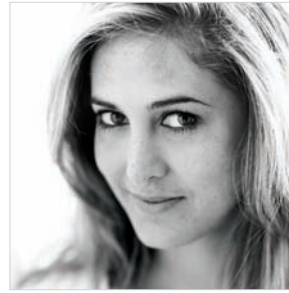
For fall '13, the color story for my women's ShopNBC sportswear collection is based upon those exact memories: the “cherished shades” of racing colors (the silken wardrobe of the jockeys based on their stable's official registered colors). Memories of thoroughbreds and their riders in the cool fall air in Kentucky can be found in the Subtle Khaki, Gold, Silver and Terracotta pop against the brights like Cerise, Lime Green and Aquamarine.

Fashion Influencers



Meg McDonald | Mood Fabrics
moodfabrics.com
facebook.com/mood.fabrics
twitter.com/mood_fabrics
pinterest.com/moodfabrics
instajelly.com/mood_fabrics
moodsewingnetwork.com

You couldn't have made it through the '80s without all the jewel tones and neon colors forever warping your color psyche. The grownup me, who tends toward neutrals, fights every day with the 20-something me who still wants to wear Bright Pink jackets or Sapphire jumpsuits. I associate those bold colors with the power, affluence and creativity that marked the decade.



Candice Pool | Finn Jewelry
finnjewelry.com
facebook.com/finnjewelry
twitter.com/finnnewyork
instagram.com/finnjewelry
finnjewelry.com/category/blog

I've always loved the Victorian and Art Deco Eras because of their opulence and grandeur, but of the more recent decades, the bright pop colors of the '80s have made their way into collections such as our Love Knot Ring collection, with its Pink Sapphire and Yellow Sapphire Love Knots. At the same time, I've also been influenced by the more muted tones that have been popular in the past decade. The Soft Corals and Moonstone within the collection are examples of those influences.

If you are intimidated by committing to all over color, remember that just a pop can have as much dramatic impact.



Jauretsi Saizarbitoria | Chief Curator, The Inside Source, eBay
theinsidesource.com
facebook.com/jauretsi
twitter.com/jauretsi
pinterest.com/jauretsi
sugarbarons.com

As a warm blooded Cuban, I would say that the color which identifies me most is Red. It's the color of passion, emotion and drive. As a curator for eBay's *The Inside Source*, I find that Red is always in fashion whether I'm writing about the classic Red lipstick of the season or a solid pair of Red pumps, because wearing Red will always evoke strength and power. There's a reason stop signs are Red too — watch out! Let's just say it's also my lucky color when I drop a bass heavy set while DJ'ing in New York. Hail to Red, she'll never do you wrong.

Fashion Influencers



Kendra Scott | KENDRA SCOTT Jewelry

kendrascott.com
facebook.com/kendrascottjewelry
twitter.com/kendra_scott
pinterest.com/kendra_scott
instagram.com/kendra_scott
blog.kendrascott.com

The '60s have always been influential in the colors and silhouettes I choose for my designs. My jewelry is known for its rich stones and textures in bold color mixes, and both fashion and pop culture of the sixties epitomized this. The '60s mod fashion was all about bright colors and vivid patterns, from Turquoise to Hot Pink to Yellow, and these colors have always had a major presence in all of my collections. There was a sense of carefree fun and excitement during this time, as people vacationed in places like Palm Springs and Copacabana, and this was also reflected in the fashion of the time. My latest collection infuses my classic, bright-colored stones with intricate, and palm etched metal silhouettes, giving it a '60s tropical chic feel. People during that time period were shifting away from the conservative fashion that preceded them and learning to express themselves through fun, colorful fashion. The decade was bold, expressive and people weren't afraid to try new things. As a designer, I absolutely love that!

Don't be monochromatic. Find a way to add color to your look everyday! Be bold and pair opposites on the color wheel like Orange and Turquoise, and Emerald and Pink. Never wear Black on Black! Whether you put on a splash of Emerald, Turquoise or Red, there is always a way to add color to your neutral looks. While I always encourage my customers to be daring, it's also important for them to stay true to their personal style. Color can be used to express style, no matter your preferences. One of the best and most affordable ways to do that is through accessories. Rather than buying clothing in every trending color for the season, invest in jewelry, shoes, handbags and other accessories that you can pair with your staples. This helps to stretch your wardrobe and keeps it timeless.



Dallas Shaw | Dallas Shaw Design

dallasshaw.com
twitter.com/dallasshaw
pinterest.com/dallasshaw
instagram.com/dallasshaw
dillydallas.blogspot.com

The style and colors in the '20s are a constant inspiration for me. I always swoon over a rolled stocking, or a shift dress with beads and rhinestones and fringe.

I find that when I am working on fashion illustrations, pulling my style picks and even getting myself dressed in the morning, I am always mixing a contrast of colors with a little bit of embellishment. The lights and darks paired in that decade always seem glamorous to me. I like the very Light Cream shades women were wearing paired with Deep Black details. And that shade of barely-there Pink always made their pearls look even more alluring.



Colleen Sherin | Senior Fashion Director, Saks Fifth Avenue

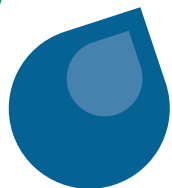
saksfifthavenue.com/entry.jsp
facebook.com/saks
twitter.com/saks
pinterest.com/saks

Each decade had its own particular beauty associated with it. I suppose I am drawn to the glamour of the '30s and think of charmeuse bias-cut gowns in lovely powdery pale shades. I also love the "pop" of the '60s and have a hard time resisting the vibrant colors of a classic Pucci print, especially Pinks, Purples and Turquoise.

Wear what flatters you, not necessarily what's the trendiest at the moment. This will ensure that you'll look good and feel good and will wear something more than one season.



Emerald
PANTONE
17-5641



Mykonos Blue
PANTONE
18-4434



Linden Green
PANTONE
15-0533



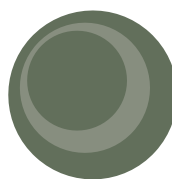
Acai
PANTONE
19-3628



Samba
PANTONE
19-1662



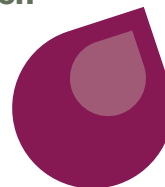
Koi
PANTONE
17-1452



Deep Lichen Green
PANTONE
18-0312



Turbulence
PANTONE
19-4215



Beaujolaais
PANTONE
18-2027



Carafe
PANTONE
19-1116



Fall 2013: A Versatile and Unisex Color Palette

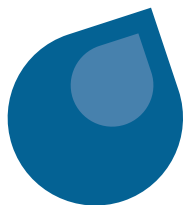
This season, more than ever, there is a shift towards a unisex color palette. Similar to the women's palette, the versatility of the men's colors for fall 2013 allows for more experimentation as the weather cools.

Luxurious **Emerald**, a sophisticated and vivid green, should be paired with **Mykonos Blue** or **Linden Green** for a clean and classic look. **Acai** adds exotic mystery when paired with bold statement colors like **Samba**, while **Koi** remains decorative and dynamic, adding a pop of orange to a neutral wardrobe. **Deep Lichen Green** acts as the cornerstone color for the men's palette as well; however, pair the shaded mossy green with **Beaujolaais**, a full-bodied red, for an elegantly masculine, quintessential fall look.

Unpredictable **Turbulence** and warm, rich **Carafe**, also play vital roles in men's fashion trends, serving as strong staple hues for outerwear throughout the cooler months. Create a well-balanced look by combining either neutral with Beaujolaais or Koi.



Photo: Richard-Phibbs



Mykonos Blue
PANTONE
18-4434

Tommy Hilfiger

inspiration

Classic Tommy Hilfiger colors and patterns.

prominent colors

Reds and Blues in shades of Cabernet and Navy Blazer are grounded by a palette of earth-toned neutrals including Bistre, Toasted Coconut and Carafe.

signature color

Jewel tone Reds, Green and Deep Blue in shades of Port Royale to Pine Grove and Deep Well to Navy Blazer.

must-have item for fall 2013

Sartorial outerwear in rich tones of Navy Blazer and Deep Well.

What color advice do you share with your customers?

Deep Navy is a preppy staple that looks good on everyone.

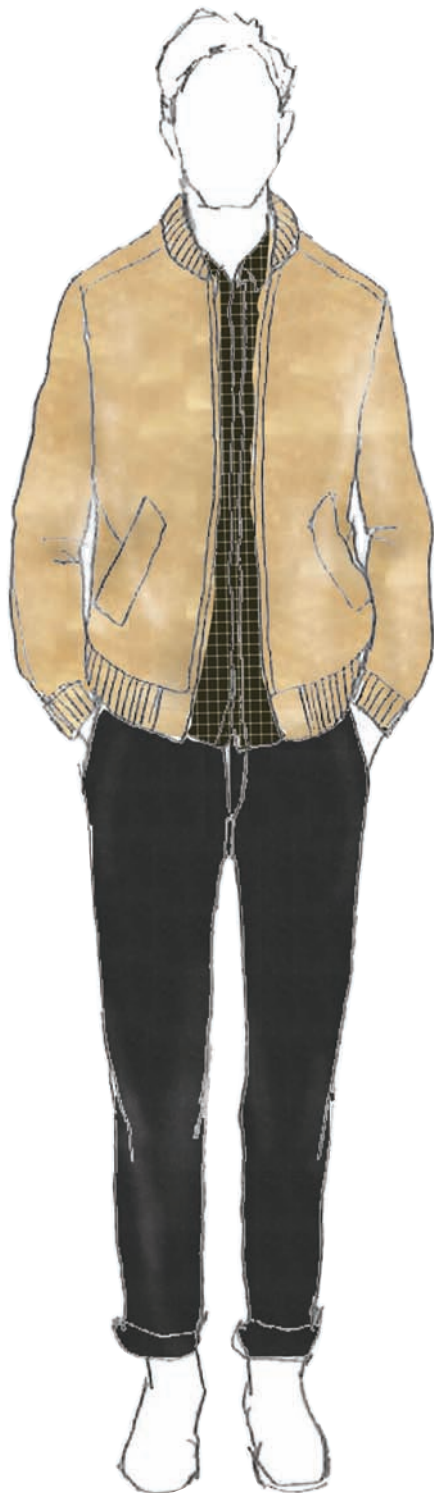
tommy.com

facebook.com/tommyhilfiger

twitter.com/tommyhilfiger

pinterest.com/tommyhilfiger

instagram.com/tommyhilfiger



Carafe
PANTONE
19-1116

Steven Alan

inspiration

The '60s, Françoise Hardy, post-bop jazz.

prominent colors

Soft Ecru and Beige tones with Dusty Navy and Olive Wood, Pops of Slicker Yellows and Riot Reds.

signature color

Shades of Beige — it is a great neutral and so versatile.

must-have item for fall 2013

Beige suede men's bomber jacket and the women's Camel trench coat.

What color advice do you share with your customers?

Incorporate soft color blocking into your wardrobe.

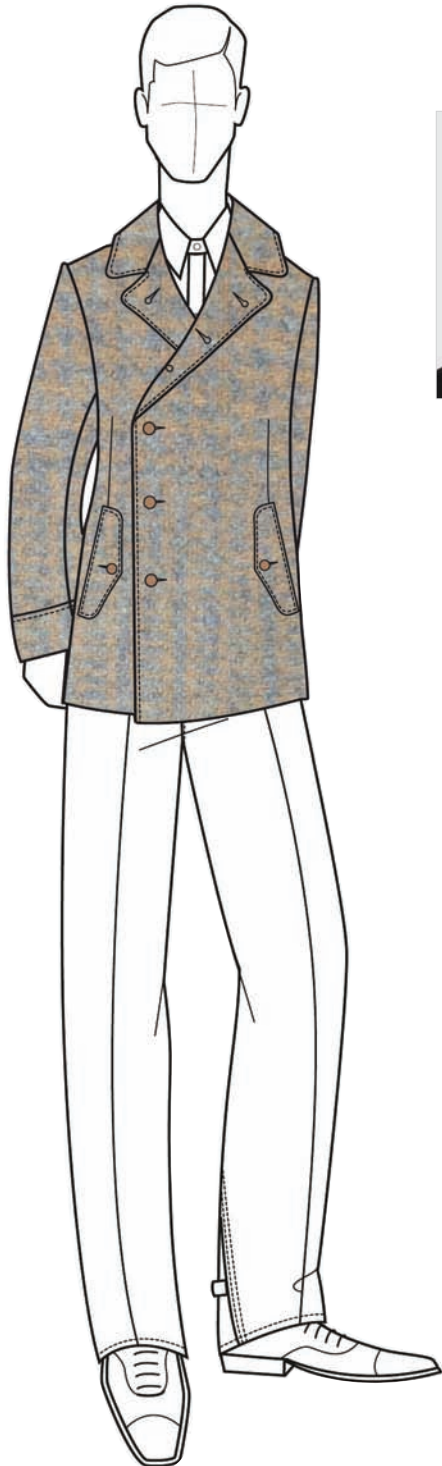
stevenalan.com

[facebook.com/stevenalancollection](https://www.facebook.com/stevenalancollection)

twitter.com/steven_alan

[pinterest.com/stevenalainstagram.com/stevenalan](https://www.pinterest.com/stevenalainstagram.com/stevenalan)

blog.stevenalan.com



Turbulence
PANTONE
19-4215

Timothy Everest

inspiration

A listed Georgian townhouse in the heart of London's East End once occupied by Bloomsbury artist and writer Mark Gertler. As we delved into his work, the one painting that had a profound influence was *The Merry-go-Round*. Our collection nods towards the Bloomsbury period as well taking influences from the league of gentleman of the '30s and '40s. The overall silhouette is relaxed, tailored separates — perfect for the modern man's wardrobe for this season.

prominent colors

Three mini color stories: Vivid Yellow, Rich Red and Indigo used as highlights to lift a wider palette of neutrals — Forest Green tweed, denim-look herringbones and flannels immersed in Camel, Navy and Steely Gray.

signature color

Vivid Yellow, Rich Red and Indigo are highlighted in the collection — each plays an equal part.

must-have item for fall 2013

Our double-breasted peacoat in a lovely lovat fabric, which has been realized in a muted shade of Tealy-Beige.

What color advice do you share with your customers?

Colors come and go in trend but as a bespoke tailor I will say you should always chose colors that suit you, work with your own unique personality and those which make you feel at your best.

timothyeverest.co.uk

[facebook.com/timothyeverestfinetailoring](https://www.facebook.com/timothyeverestfinetailoring)

twitter.com/timothyeverest

timothyeverest.co.uk/blog



Carafe
PANTONE
19-1116

Angelo Galasso

inspiration

English aristocracy and leisure time.

prominent colors

Cognac, Burnt Browns, Blue-Black, Blue Night and Burgundy.

signature color

Blue because throughout my life it has been a sign of relaxation and serenity. I believe it is a complete color with the right mix of casualness and elegance. It is at the same time sombre and classic. It also has a passionate and strong tint. Blue is in harmony with our philosophy of classical elegance that is at the same time extravagant and constantly in evolution. It generates the perfect combination of style and matching for men.

must-have item for fall 2013

A houndstooth embossed leather coat in Brown.

What color advice do you share with your customers?

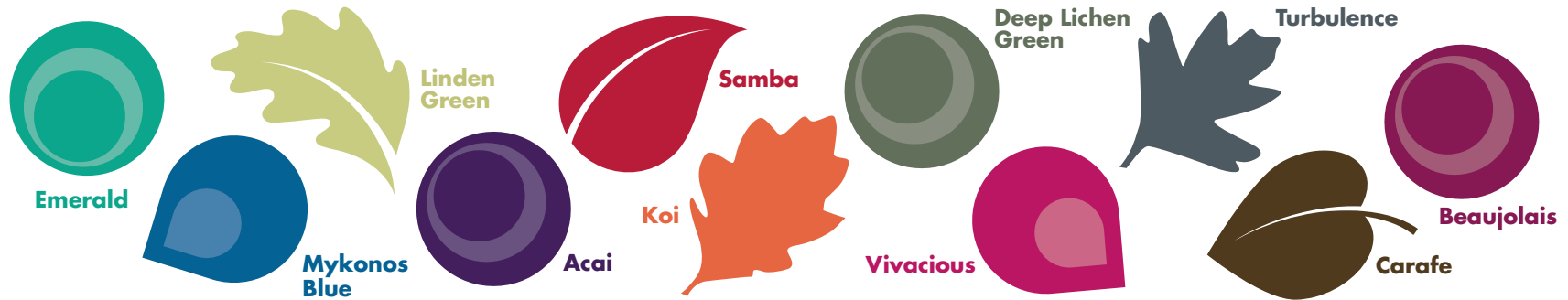
Black is an easy color to match other colors to and always looks chic and elegant. This works especially well for men who are not used to constantly changing the style and colors of their outfits like women are. Dark colors like Burgundy, Brown, Blue and Gray are a must for the winter season.

angelogalasso.com

facebook.com/pages/angelo-galasso/423432331034636

twitter.com/angelogalasso

PANTONE® FASHION COLOR REPORT FALL 2013



go to

pantone.com/fall2013

vote for your favorite color

know how others voted

like your favorite designers

see fashion color archives

use PANTONE Color tools

and... tweet about it

@pantone #fcrf13

Emerald PANTONE 17-5641	CMYK	85.8.57.0
Mykonos Blue PANTONE 18-4434	CMYK	96.45.9.22
Linden Green PANTONE 15-0533	CMYK	24.10.61.0
Acai PANTONE 19-3628	CMYK	76.92.14.38
Samba PANTONE 19-1662	CMYK	12.99.75.15
Koi PANTONE 17-1452	CMYK	6.74.80.0
Deep Lichen Green PANTONE 18-0312	CMYK	60.41.63.22
Vivacious PANTONE 19-2045	CMYK	13.98.29.14
Turbulence PANTONE 19-4215	CMYK	68.54.48.28
Carafe PANTONE 19-1116	CMYK	56.68.93.47
Beaujolais PANTONE 18-2027	CMYK	39.100.40.23

PANTONE Fashion Color Report, Volume 39, February 2013.

Pantone LLC, 590 Commerce Blvd., Carlstadt, NJ 07072 Tel: 201.935.5500. PANTONE Colors displayed here may not match PANTONE-identified standards. Consult current PANTONE FASHION+HOME Color System publications for accurate color. PANTONE® and other Pantone LLC trademarks are the property of Pantone LLC. Pantone LLC is a wholly owned subsidiary of X-Rite, Incorporated. All other trademarks are the property of their respective owners.

© Pantone LLC, 2013. All rights reserved. Design by John De Francesco.